



RZR PRO XP/PRO R/TURBO R ALUMINUM DOORS

IMPORTANT: Thank you for purchasing this Cagewrx product. Please read through this entire document before proceeding with installation. If you are not confident in your mechanical skills, please seek the help of a professional to perform the installation. Check your packages immediately upon arrival to ensure that everything listed is included, and to check for damage during shipping. If anything is missing or damaged, or if you need technical assistance with any aspect of this installation, call Cagewrx at (951) 223-9118 as soon as possible. This document last updated Jul 2022.

APPLICATIONS

These Installation Instructions apply to the following Cagewrx products:



CWRZRPRO2DOORS

TOOLS NEEDED

- Torx T40
- Torx T30
- Torx T25
- 4mm Hex Key
- 5mm Hex Key
- Ratchet
- 8mm Socket
- 10mm Socket
- Rivet Nut Tool (or see video in step 4)

PARTS LIST

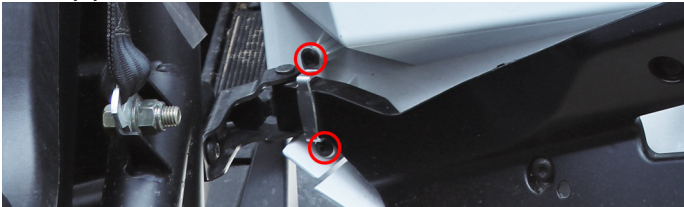
1. Driver Side Door Panel
2. Passenger Side Door Panel
3. Driver Side Paddle
4. Passenger Side Paddle
5. Driver Side Paddle Bracket
6. Passenger Side Paddle Bracket
7. 23/64 Drill Bit
8. (12) 6mm Rivet Nut
9. (12) M6-1 x 20mm Button Head Cap Screw
10. (4) M6-1 x 16mm Socket Head Cap Screw
11. (4) M6-1 Locknut
12. (4) #12 SÆ Flat Washer
13. (2) 1" Spring

BEFORE YOU BEGIN

Remove your factory door skins and latches and be sure to set aside the clip nuts from the factory door skins as you will reuse them. You will not need your factory door paddles. During the install, leave all hardware loose enough to allow the doors and brackets to adjust. Once everything is adjusted correctly, you will then begin to tighten everything down.

INSTALLATION PROCEDURE

1. Begin by removing the small bracket at the bottom of the door frame that is held in place with (2) Torx T25 bolts. You will not reuse these.



2. Remove the factory doors skin by removing the (11) Torx T40 bolts that hold the door skin to the door frame. Remove the clip nuts from the door skin as you will reuse them.

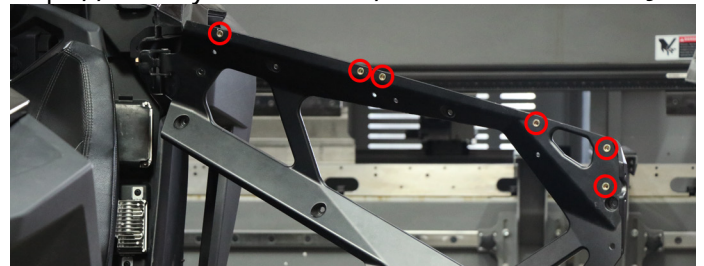


3. Remove the factory paddle and latch by removing the (2) Torx T30 bolts and the (2) 8mm bolts. You will reuse the factory latch, but not the paddle.

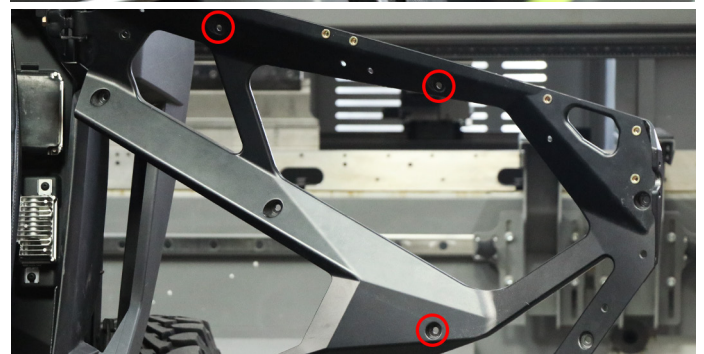
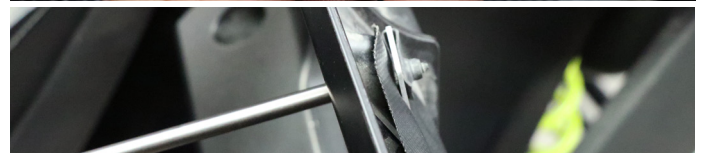


4. Drill out the 6 holes marked below using the supplied 23/64" drill bit. Install the supplied 6mm Rivet Nuts using a Rivet Nut Setter or you can use a bolt and a nut as shown in the video below.

<https://www.youtube.com/watch?v=l6H6wr7fJYo>



5. Install the factory clip nuts onto the supplied aluminum cutouts as shown below. These are needed to install PRP door bags. Save these for later use if you plan to install door bags at a later time. There are 3 on each door. Secure these pieces to the door frame with 3 of the factory Torx T40 bolts in the locations below.



6. Install 6 of the factory clip nuts onto the locations shown below on our door panel. **Make sure the orientation is correct** in order for the bolts to seat properly.



7. Install your Cagewrx Door panel by starting at the top rear of the door. Proceed by sliding the front portion of the door over the factory paddle cutout.



8. Secure the top of the door panel with (6) of the supplied M6 x 20 Button Head Screws and your 4mm Hex Key.



9. Secure the rest of the door panel reusing (6) of the factory Torx T40 bolts.



10. Assemble the Driver Side paddle using the supplied paddle and paddle bracket. The driver side paddle will face left and the driver side bracket is shown below.



11. Place the supplied paddle on top of the paddle bracket and line up the top hole. Secure the paddle to the bracket with the supplied M6 socket head cap screws, #12 washers, and locknuts using your 5mm Hex Key and 10mm socket or wrench. The slotted hole in the middle of the paddle bracket will serve as a stopping point for your paddle. Make sure you install the washer on the nut side for the paddle to work properly. This will be adjusted in a later step.



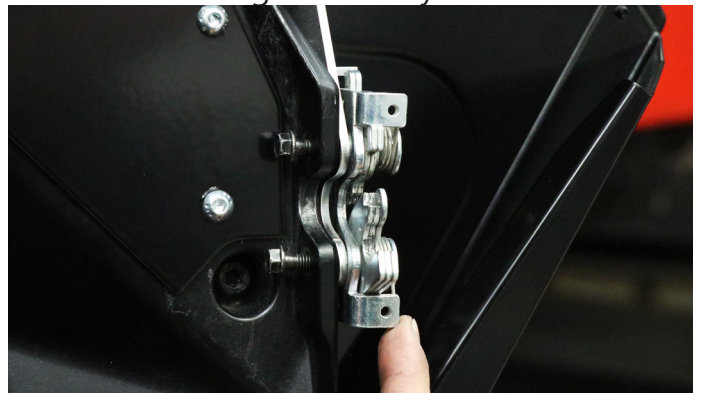
12. Install the supplied Spring by sliding it onto the bracket from the top and into the hole on the bracket. Then slide the other end of the spring onto the paddle and into the hole.



13. Install the paddle assembly to the door by sliding it into the door channel from the front of the door panel.



14. Install the factory door latch to the paddle and the door using the factory 8mm bolts.



15. **Adust the striker if needed** by loosening the factory Torx T30 bolts slightly and adjusting until the door is aligned best to close properly.



16. **Adust the paddle position** by sliding the position of the bottom paddle bracket bolt forward or back until the paddle is flush with the door in the rested position.



17. **Make sure all hardware is tightened down** once everything is aligned and functioning properly. You are now finished installing your Cagewrx aluminum doors. Enjoy!

