

RZR XP 2 Door Install Instructions



We recommend reading through all instructions to become familiar with the install before beginning.

Step 1. Remove factory doors and tube that factory doors mount to. Remove factory latches from doors as they will be used on the new doors.

Step 2. Install the main door mount to the RZR as shown in the pictures below. Make sure to install the Bolts as shown so that the nuts are on the inside of the bracket near the top of the mount.

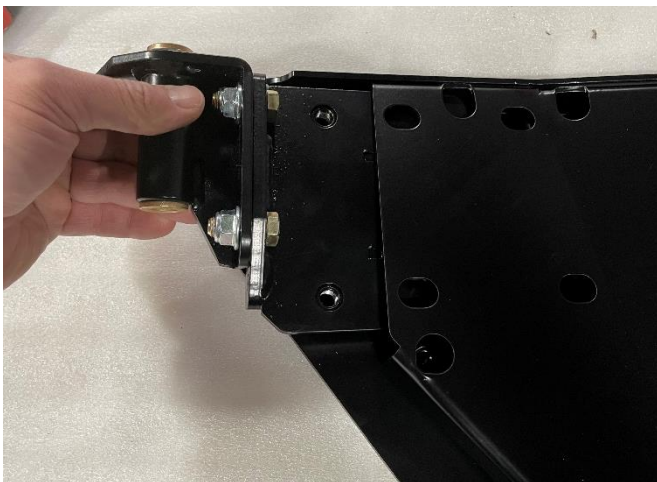
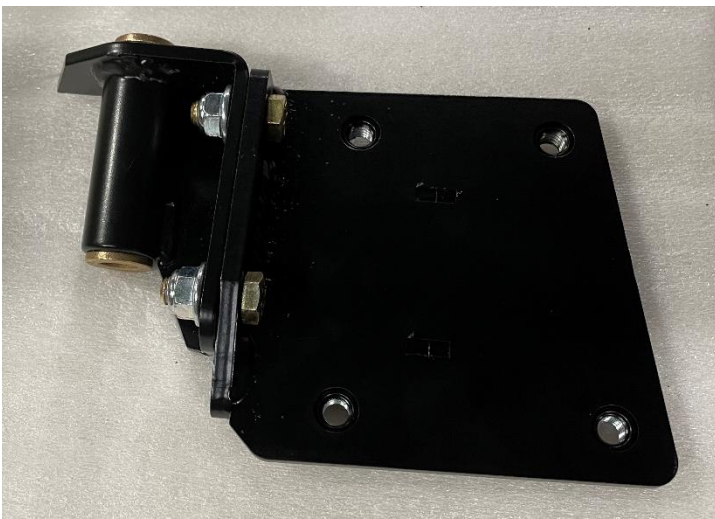
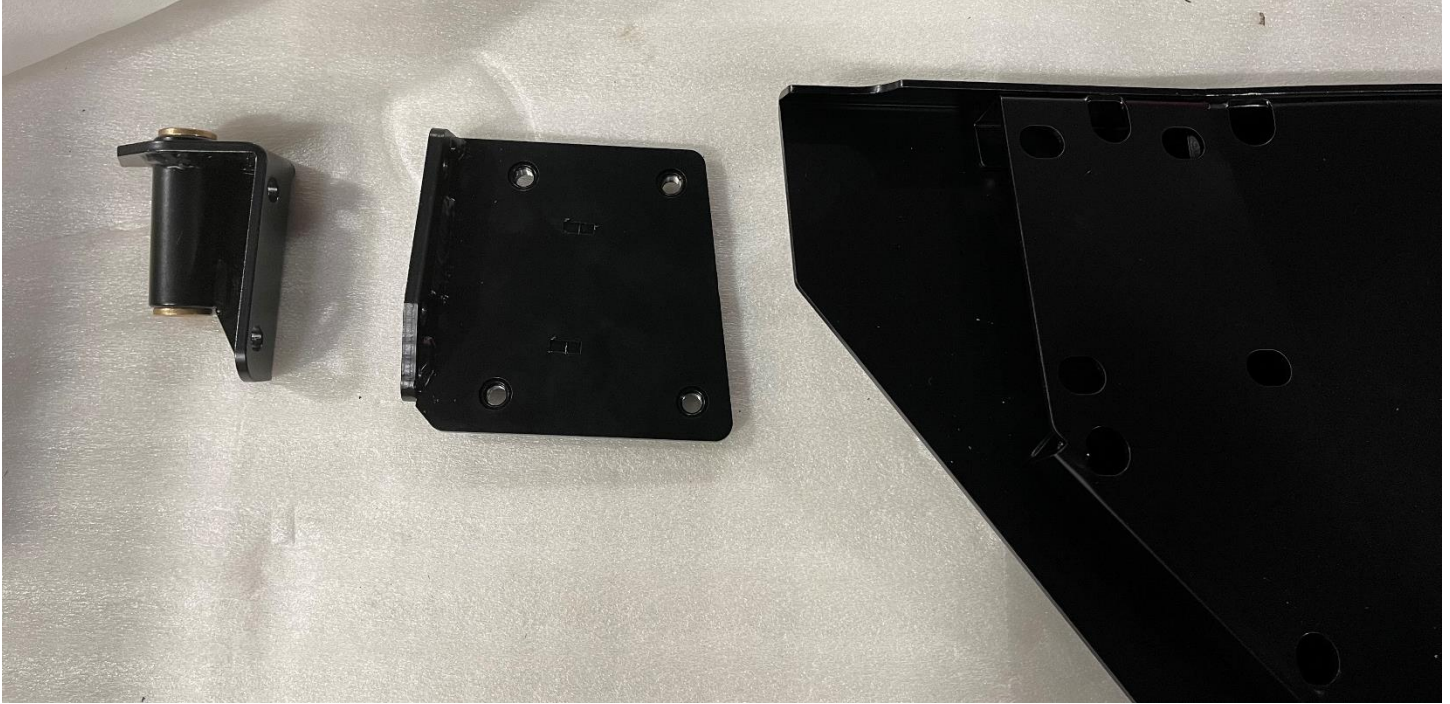
Tip: Leave bolts slightly loose until they are all installed. Then tighten all bolts and nuts.

Included Hardware

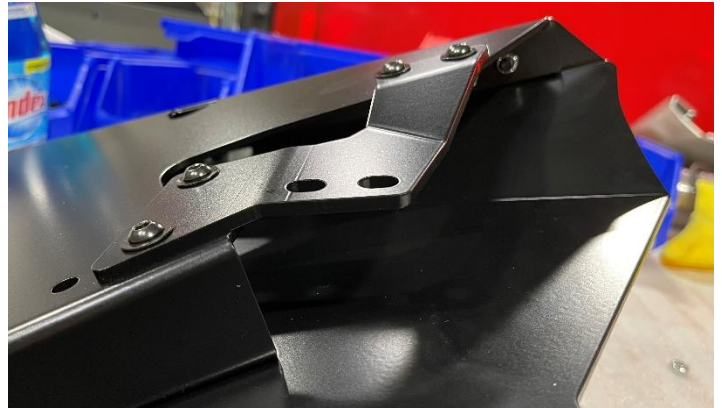
Qty	Description
2	½" X 4.25 Bolt
10	3/8" X 1" Grade 8 Bolts
8	3/8" X .75" Flanged Bolts
18	¼" X .625" Black Bolts
8	M6 X 22mm Bolts
2	M8 Nuts
2	½" Flat Washers (Black)
2	½" Lock Washers (Black)
4	Large Flat washers
10	3/8" Flanged Nylock Nuts
14	¼" Nylock Nuts
24	¼" Flat Washers (Black)
4Ft	Small Adhesive backed seal
14Ft	Large Adhesive backed seal
4	Aluminum Striker Spacers



Step 3. Lay out the door, mount plate, and hinge as shown below. Assemble in the order shown or it will be more difficult to assemble. Snug the bolts but don't tighten them all the way. These are all adjustment points that will need adjustment when on the machine before tightening.



Step 4. Install the front latch plate and factory latch as shown below. Use 1/4 bolts, washers, and nuts for the latch plate. Use M6 bolts for the factory latch. The M6 bolts should be in their own labeled baggie in the hardware bag.



Step 5. Carefully install door using the large 1/2" bolt with a lock washer and Flat washer installed on the bolt (put lock washer on bolt first, then flat washer.) Slide door hinge into mounting bracket on RZR.

At this point, you can tighten the Main 1/2" bolt till snug so that it does not have play so you can adjust the rest of the door.

There are several adjustment points to get doors to fit and close well. To slide the door forward or backward and to raise or lower the front of the door, loosen the 4 flange bolts holding the door to the mount plate. If you leave one bolt fairly tight, and one just snug you can adjust the door without it falling out of place while you tighten the bolts after adjustment.

To adjust gaps or tightness along the bottom of the door, slightly loosen the two grade 8 (gold) bolts and nuts that hold the mount plate to the hinge pivot. This will allow you to tip the door more outward or inward at the bottom. These two bolts must be tight to avoid unwanted adjustment after final adjustment.

Step 6. Adjust latch and striker plate as needed. Included are 4 spacer plates to space out striker if needed. Because of variances on machines, you may not need any spacers, or you may need up to two spacers on either side or both. If your doors won't latch you may need to replace the top Torx bolt on



Step 7. Install hinge cover using the 1/4" bolts. Test for interference from door when opening before tightening.

Step 8. Install large bulb seal along the bottom edge of door and up front edge to first corner. You can use the alternative smaller bulb seal along the front upper edge if you want the door to be closer to the plastics.



Step 9. If you have a model with the rubber seatbelt positioner strap, Install the strap as shown below. Use the factory bolt that is holding the strap. Install one of the large washers on the the bolt, then the strap, then another washer, then the included M8 nut. Then put the remaining threads through the hole and use the factory locknut to fasten on.

