

Dunes 2 Dezert SXS Inc.

POLARIS RZR 4DR 1K DOOR INSTRUCTIONS

Supplied Hardware:

1. 4- M10 x 1.25 Bolt x 70mm HHCS
2. 4- 5/16-18 x 1" BHCS
3. 4- 3/8-16 Nylon Locknut
4. 12- 3/8 Washer
5. 8- 1/4" Washer
6. 16- 5/16 x 1" HHCS
7. 20- 5/16-18 Nylon Locknut
8. 34- 5/16 Washer
9. 4- 3/8-16 x 2" HHCS

Required Tools:

1. Standard Wrench & Socket Set
2. Metric Wrench & Socket Set
3. Assorted Screw Drivers / Flathead
4. T40 Torx
5. T30 Torx

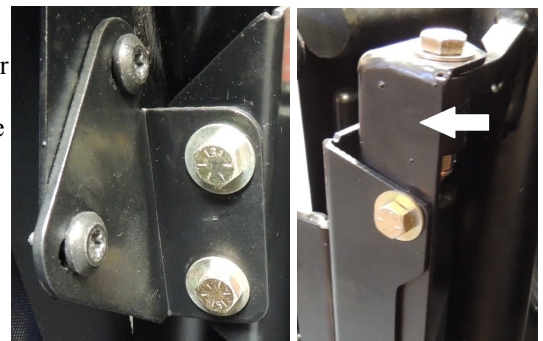


NOTE: PROPER FIT OF THESE DOORS RELIES ON A QUALITY INSTALLTION.

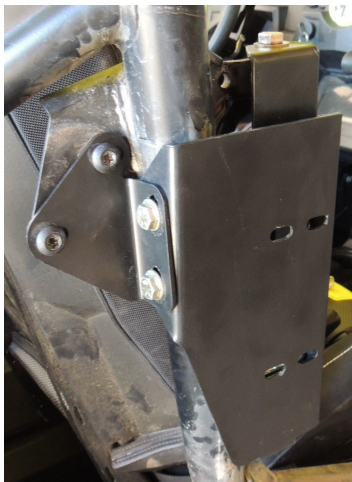
1. First you will need to remove your stock doors. You will need to remove the rear cage bolts and the lower bottom mounting bolt on the bottom of the triangle section of the rear door. Remove the center section panel and the existing latch plate. Remove the front door by removing the c-clip washers from the hinge points. Set aside the rear latch plates as they will be moved to the rear. Keep the torx bolts as they will be reused when you install the small angle bracket.



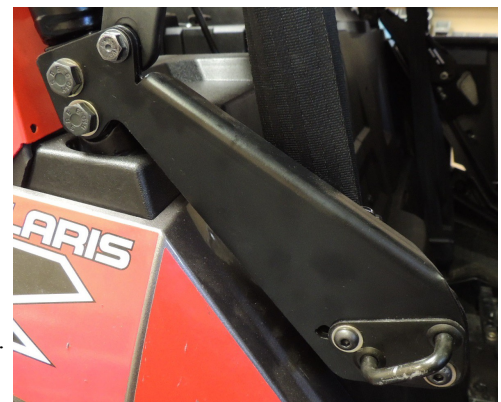
2. Install the provided sub brace, main brace, and small angle bracket to the center section of the vehicle. When installing the sub brace you may need to add a washer underneath the bracket to fill in the gap (each car is different). The 3/8-16 x 2" bolts will be used to mount the sub brace. Use only (1) 3/8" washer underneath the bolt heads. Use the 5/16-18 x 1" bolts to attach the main brace onto the sub brace. Reuse the previously removed bolts to attach the small angle bracket to where the stock rear latch plate was installed. Use the provided 5/16-18 bolts, washers, and nuts to attach the small angle bracket to the main brace. **Everything** must be installed as square, centered and as true as possible for proper alignment and adjustment ability.



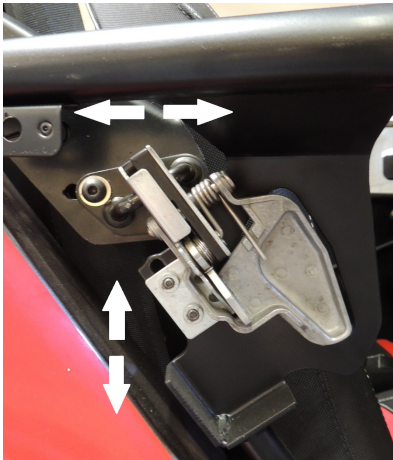
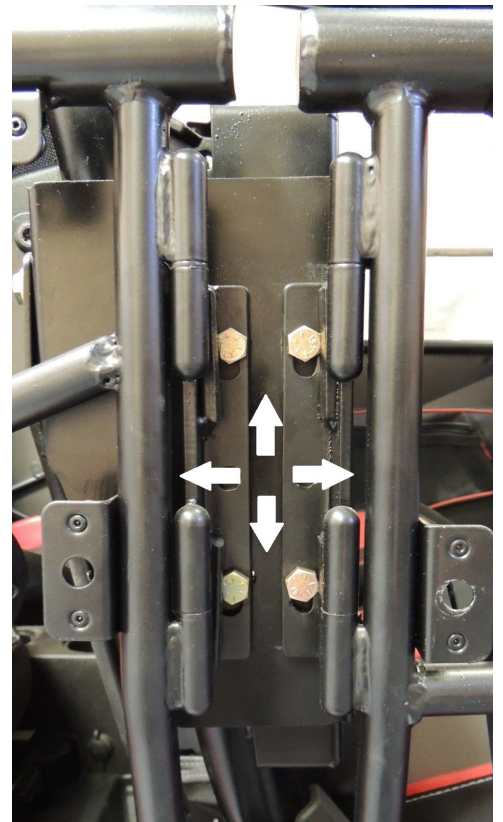
Use washers on both sides of the bolts when installing the 5/16-18 hardware in all places except the ones used when installing the doors. Only on the back for those.



3. Install the rear cage bracket using the provided M10 x 1.25 x 70 mm bolts and the previously removed stock nuts. Use a 3/8 washer underneath head of the bolts only. You will reuse the stock bolt and nut that held in place the rubber strap for the seat belt. Install the rear latch plate bracket as shown using the provided 5/16-18 x 1" BHCS.

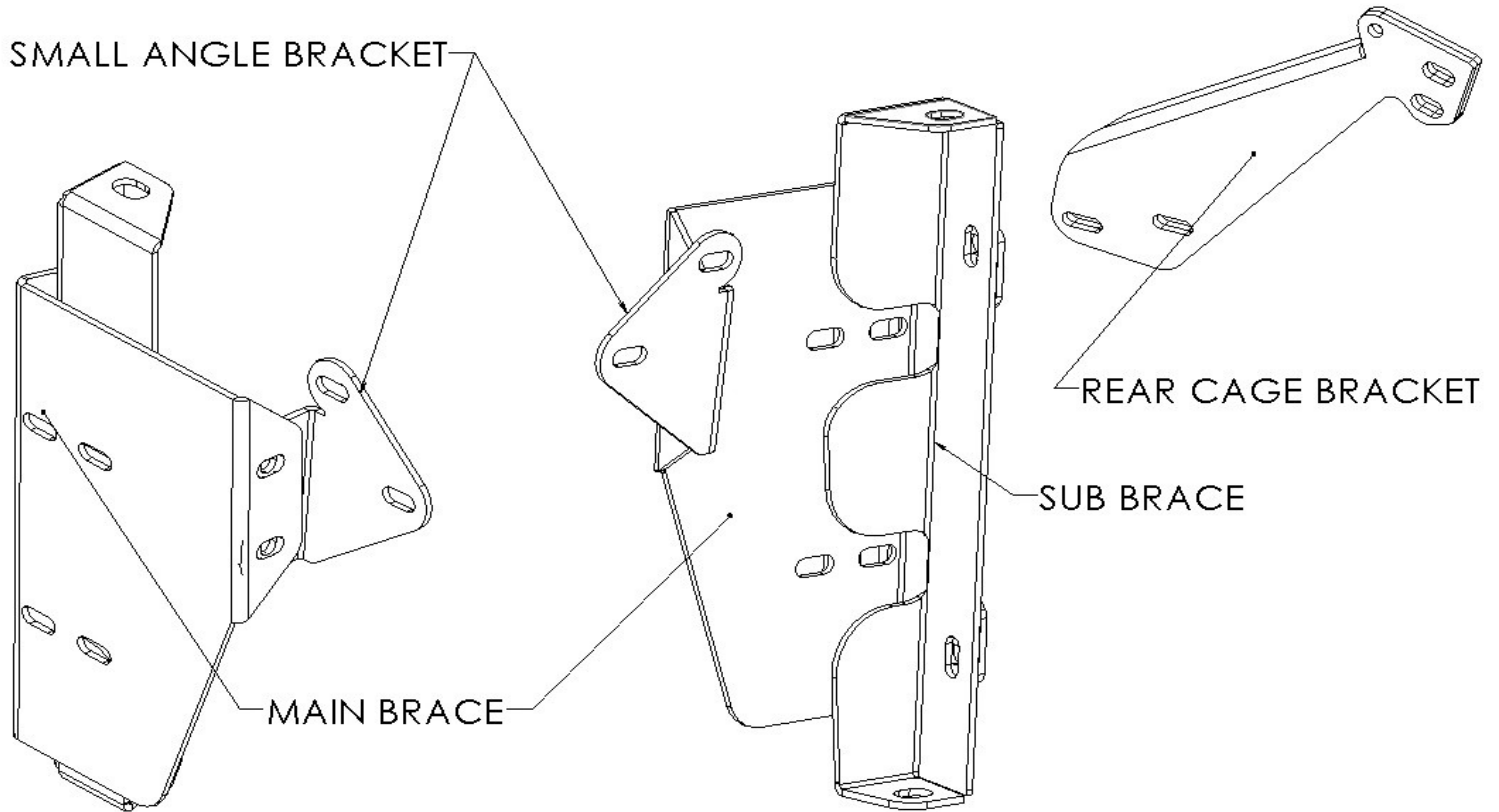


4. Remove the skins from the doors carefully prior to installation. This ensures an easier installation.
5. Swap out the door latch mechanism from your stock doors and reinstall onto the new doors. Do this carefully as to not strip them out. A friends help is recommended with this. Use the provided 1/4" washers for the small latch bolts. Make sure everything is bolted together loosely at first and adjust as necessary. Install the doors with the provided 5/16-18 x 1" bolts, washers, and nuts. The washers only go in the back of the main brace and not the front. You will need a friends help to hold everything level as you tighten all the bolts and make sure everything is aligned. Double check everything has been torqued down adequately and reinstall the skins when you are happy with the final fitment and alignment. Everything is adjustable. Attention to proper alignment installation is the key to a great fit! DO NOT RUSH THE INSTALLATION.
6. Done! Your finished install should look as the photo below.



NOTE: Everything is fully adjustable including the stock latches, latch plates, doors and all brackets.





This is the bracket configuration for the driver side.

