



Installation Instructions: CANAM MAVERICK X3 MAX SUICIDE DOORS Part # DS-4401

- Read and understand these instructions before installing the product
- This product does not provide roll over protection
- Ensure doors are securely latched and locked prior to operating vehicle
- Do not use product if there are any signs of damage

***** SAFETY FIRST: ALWAYS DISCONNECT THE NEGATIVE BATTERY LEAD ON YOUR MACHINE PRIOR TO PERFORMING ANY MAINTENANCE OR INSTALLATION.**

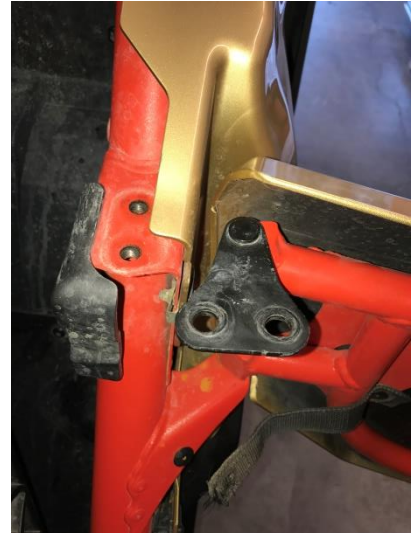
NOTE: Due to the fact that CANAM uses multiple factories to produce their UTV's, Dirt Specialties has noticed many discrepancies from one unit to the next. With that being said if you experience any fitment issues with these doors don't hesitate to contact us for help. We have tried to make the installation process of this product as simple and straight forward as possible at the same time we strive to produce products that set industry quality and durability standards. Thank you for choosing Dirt Specialties!

Step 1: Place vehicle on a flat and level surface. Place gear selector in "Park" and remove keys from the ignition.

FRONT DOORS

Step 2: Open driver door and remove the door limit strap by drilling out the rivet on the frame bracket. (3/16" drill bit)

Step 3: Now close the door and remove upper door hinge bolts from mount. Be careful as a locking compound is used from the factory. (**TIP:** Heat the bolt head slightly to loosen the compound.) While supporting the door upwards, open the door by releasing the latch and lift the door up off of lower door hinge while also removing the top hinge. Set the removed door on a work bench to remove the original latch. (**SEE PHOTOS ON NEXT PAGE**)

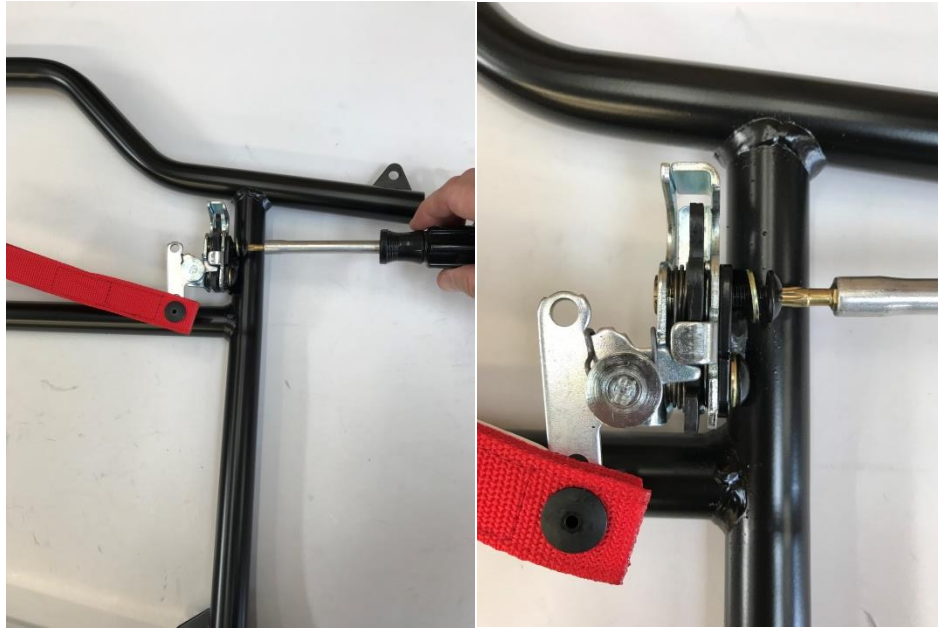


Step 4: Once on the work bench, remove the plastic latch covers. Now remove the original door latch from the stock doors and clean and oil the mechanism lightly if necessary for smooth action. Retain the bolts and washers.



Step 5: Remount the stock door latches onto the Dirt Specialties door latch bracket in the center position using the stock bolts and washers. The latch mounts on the INSIDE of the door frame bracket. Replace the stock door latch strap if loose or torn.

While on the bench install the door top tube supplied black push in end caps.



MOUNTING THE HANDLES

Handle: Locate and mount the new red door handle to the appropriate door tab on the arm rest as seen in the photos on the next page. To do so first install the shorter supplied shoulder bolt into the hole closest to the handle pull. Secure with a ¼-20 Nyloc nut. This will act as a spring stop. Clear the powder coating out of the tab using 5/16" drill bit before the next step. Slip the latch pull strap onto the handle to be mounted.

Using the longer plated shoulder bolt, push the bolt through the tab hole from the outside of the frame. Place one Nylon washer over the bolt. Mount the red handle onto the bolt. Place another nylon washer over the bolt then the spring then the nut. Position the torsion spring so that one leg is resting on the arm rest tubing and the other on the mounted spring stop shoulder bolt on the red handle. Tighten and adjust to provide a smooth sprung lever action. **TIP:** If strap is really loose at the rivet, replace rivet with a bolt and nut and tighten to remove the play.





Step 6: Check the stock lower hinge pin for any burrs and file down before door installation. (Repeat on upper hinge if needed) Mount new supplied nylon washer onto the stock lower hinge pin. Place a small amount of lithium grease or other suitable lubricant onto the lower hinge pin.



Step 7: From the bench top, test that the new door bushings are free from obstruction by temporarily sliding the top hinge pin in both sides of the machined bushing on the new doors (clear if necessary).

INSTALLING THE FRONT DOOR

Step 8: After the bushing is cleared of any obstruction, install the front driver door onto the stock lower hinge pin until it reaches the bottom. While supporting the door frame, open the door fully to install the upper hinge pin using a new supplied nylon washer. Loosely install the new supplied 8 MM bolts and stock washers. Now close the door carefully for the latch to engage.

Step 9: While the door is closed, pull upwards on the front of the door at the latch and tighten the upper hinge bolts semi tight. Open the door to test the action. You want the striker loop exactly in the middle of the open latch. Adjust if needed to retain a smooth opening and closing action. Tighten the bolts semi tight.

Step 10: Mount the door skin using the supplied black allen bolts, split washers and acorn nuts. Open and close the door making sure it works properly. Make any adjustments as needed.

TIP: In extreme cases the welded on striker pin where the latch attaches to can be adjusted up or down with a dead blow hammer if needed. Also the stock top upper door hinge bracket holes can be made bigger for more adjustment. (Repeat steps 2-10 for passenger front.)



REAR DOORS

Step 11: Remove the rear doors following steps 2-5. Careful not to break the stock weld nuts off. Use heat to loosen up the thread locker if needed. Drill out the stock latch cover rivets to remove the latches using a 1/8" drill bit.

Step 12: Locate the rear door hinge plates in the hardware box and install them where the stock rear doors mount using 2 supplied nylon washers. Secure the top bracket with the supplied 8mm bolts in neutral position. Make certain the threaded plate offset is towards the INSIDE of the car.



Step 13: Now install the rear doors onto the rear door hinge plates using the 4 supplied 8mm bolts and flat washers. Install the bolts from the inside of the car into the 4 slots in the center neutral position. Close the door and tighten semi tight.

Step 14: Carefully install the rear door skins using the supplied black button head bolts, split washers and cap nuts.

Step 15: Adjust the rear door / front door gap by lossening the four 8mm bolts on the rear door and slide the rear door to the desired position. (we recommend a 3/8" gap). Once doors are adjusted and working properly go back and retighten all the hardware. We recommend using blue Loctite on all hardware once adjusted.

CONGRATULATIONS on your install!

Tips:

- After installation of doors, ride your machine through rough terrain then check fitment again. It may be necessary to make adjustments again.
- Always check fitment before and after each ride to see if adjustments need to be made and to get the longest life out of your doors.
- Over time and use, the body of your UTV may flex and alter. This may also require adjustments to be made.

CONGRATULATIONS on your install!

www.dirtspecialties.com

